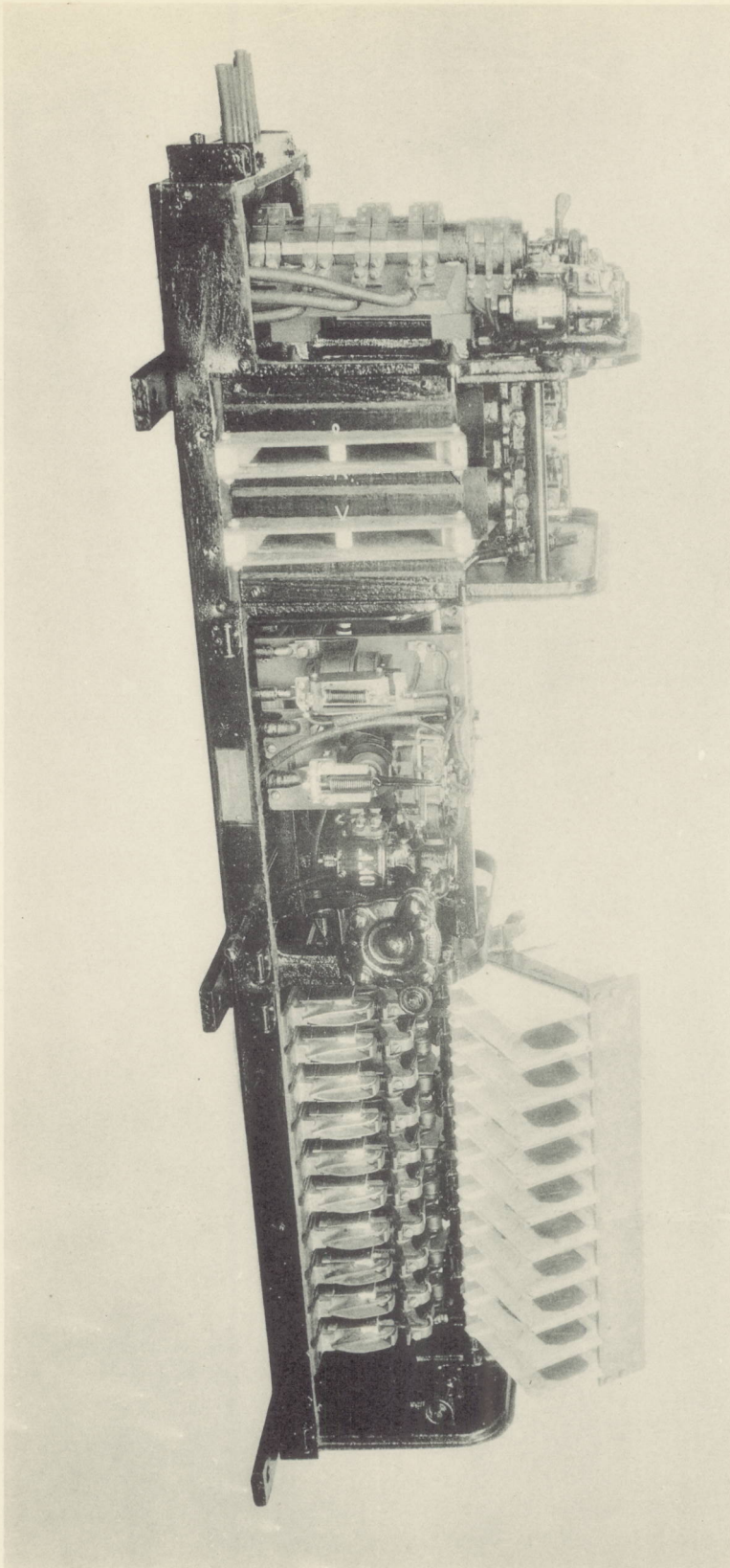


PC-10K CONTROLLER.  
INDEX E-353.7

426802

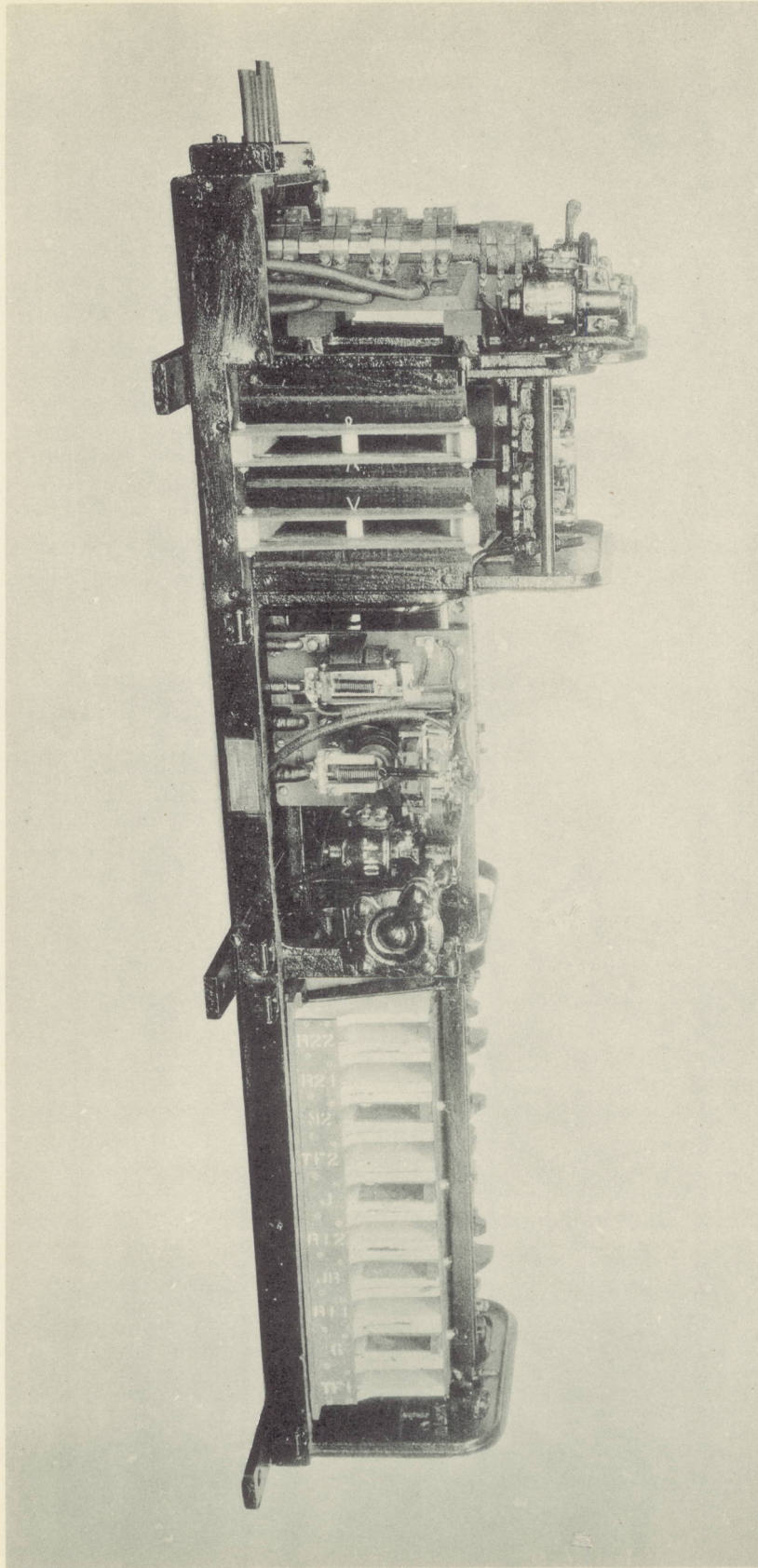
1 16 25



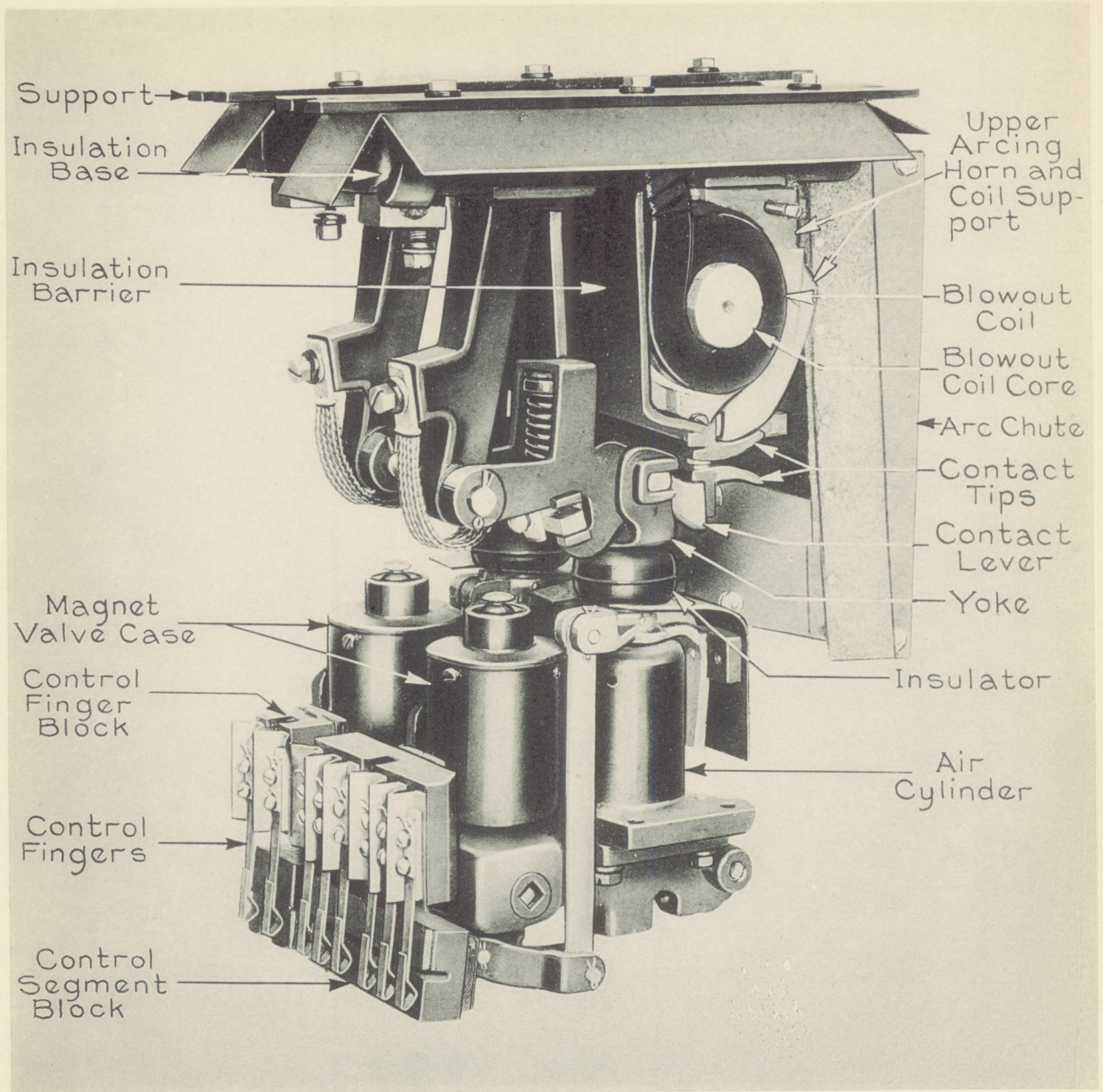
409639

PC-10-K. CONTROLLER.  
INDEX E-353.7

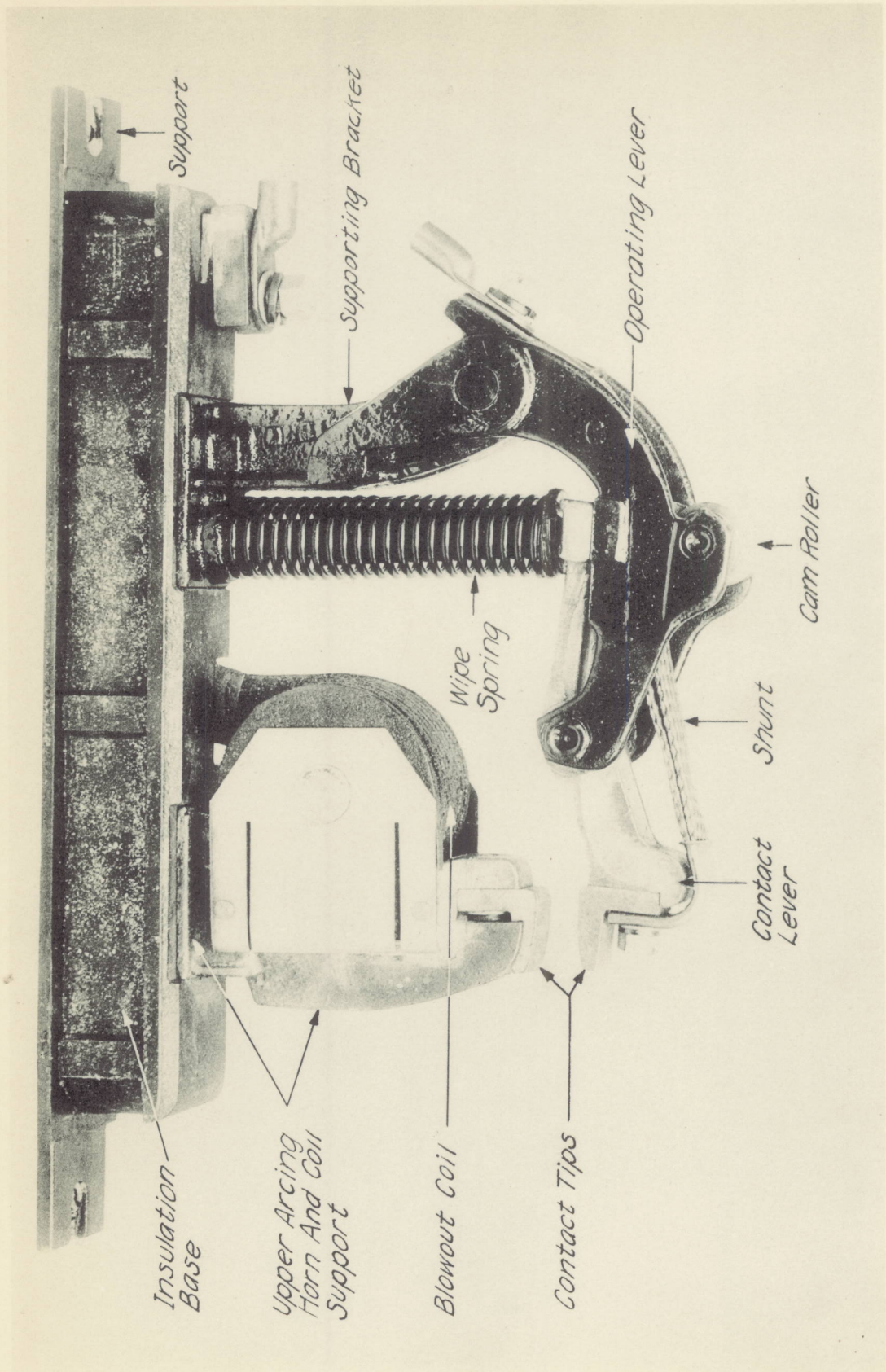
2 16 23



409638 PC-10-K. CONTROLLER.  
INDEX E-353.7 2 16 23

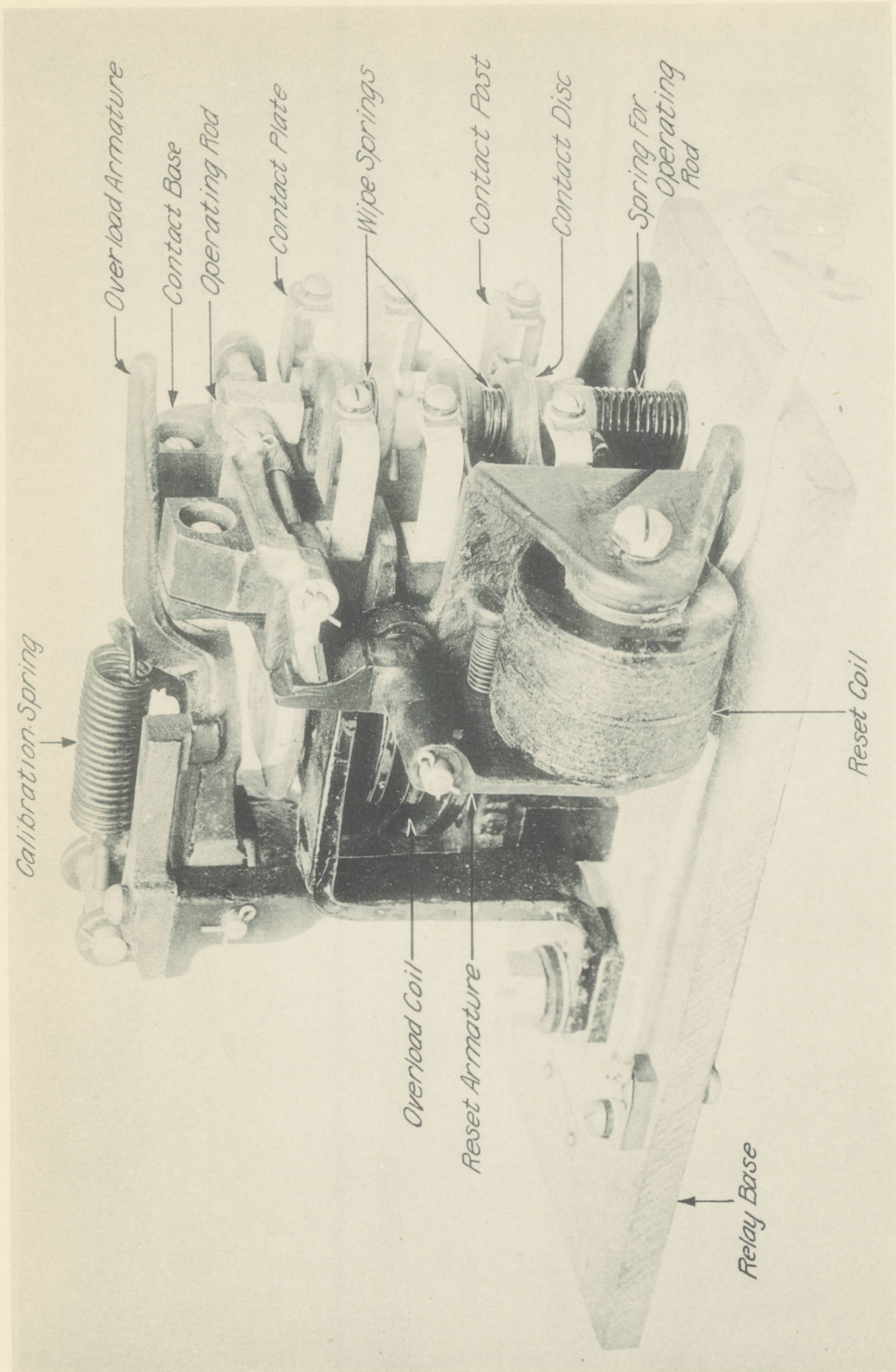


A-50226 BACK VIEW LINE BREAKER UNITS FOR TYPES PC-10 AND 12 CONTROLLERS  
E-353.7 4-30-25

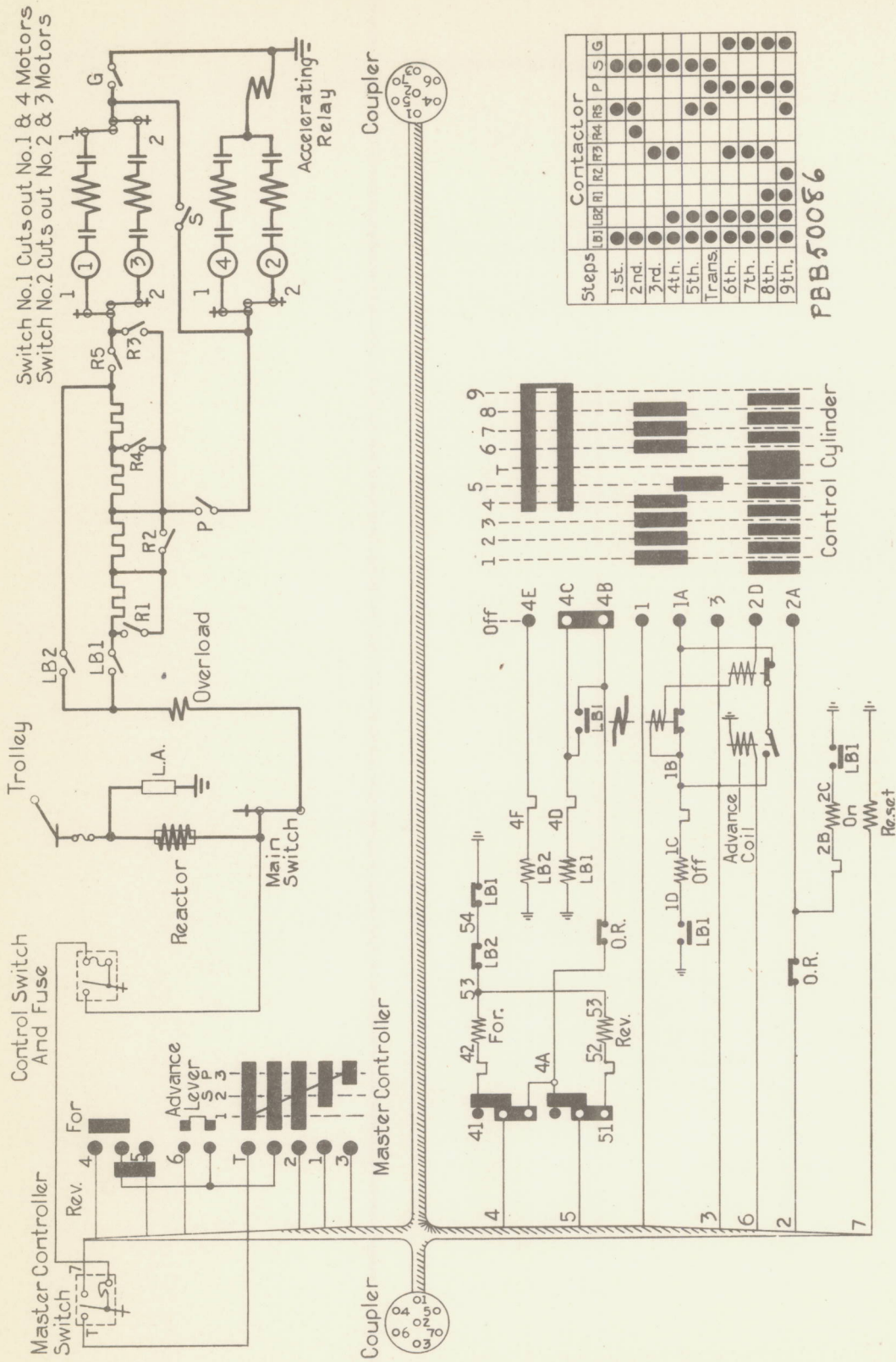


313601 CONTACTOR UNIT FOR TYPES PC-10 AND PC-12 CONTROLLERS.

INDEX E-353.7

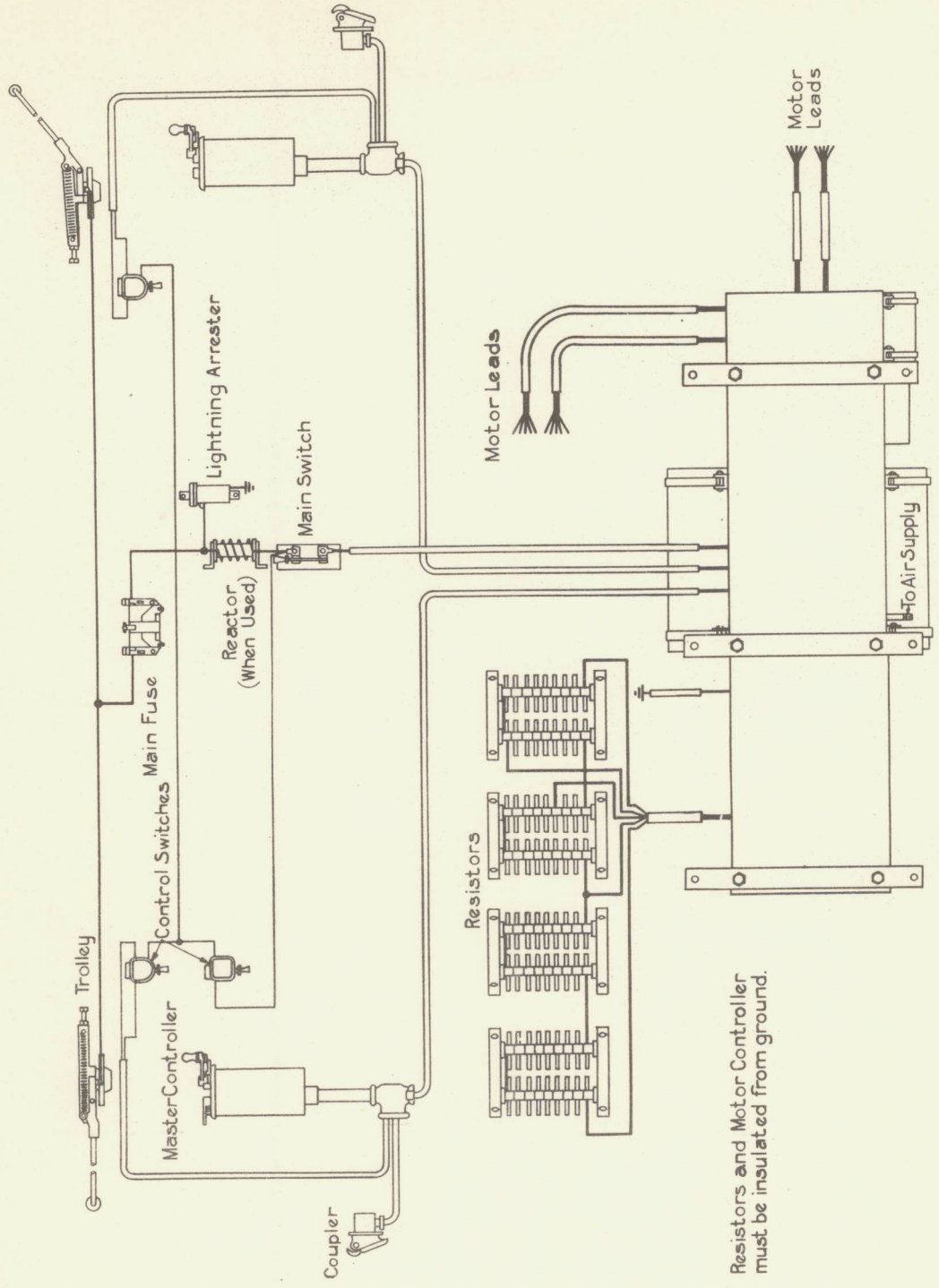


313846 OVERLOAD RELAY FOR TYPES PC-10 AND PC-12 CONTROLLERS.  
INDEX E-353.7



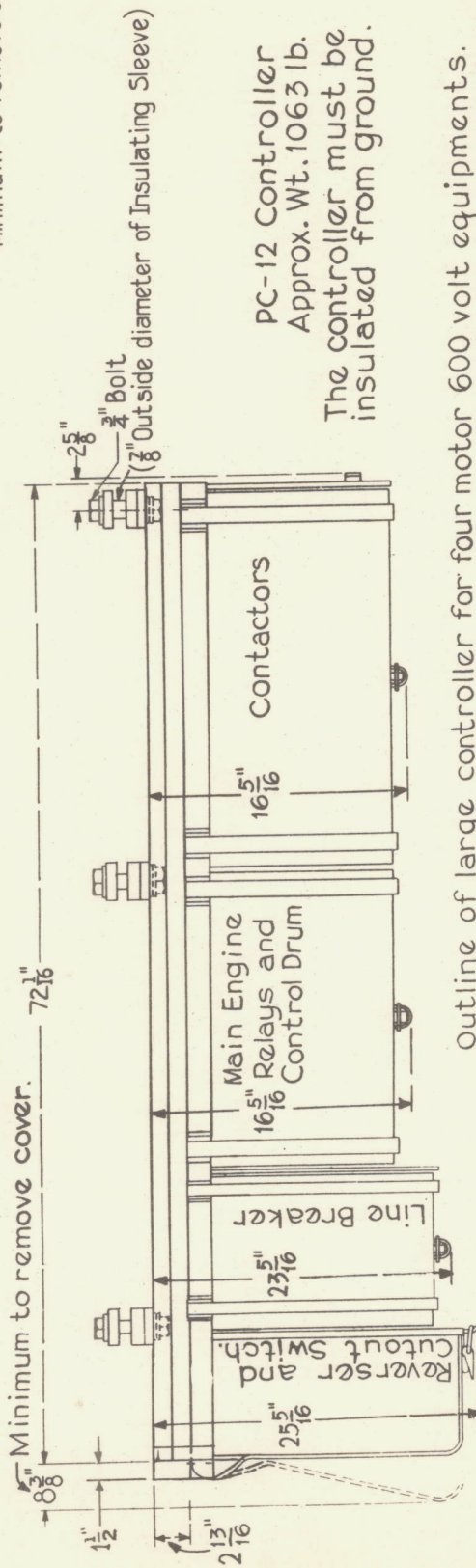
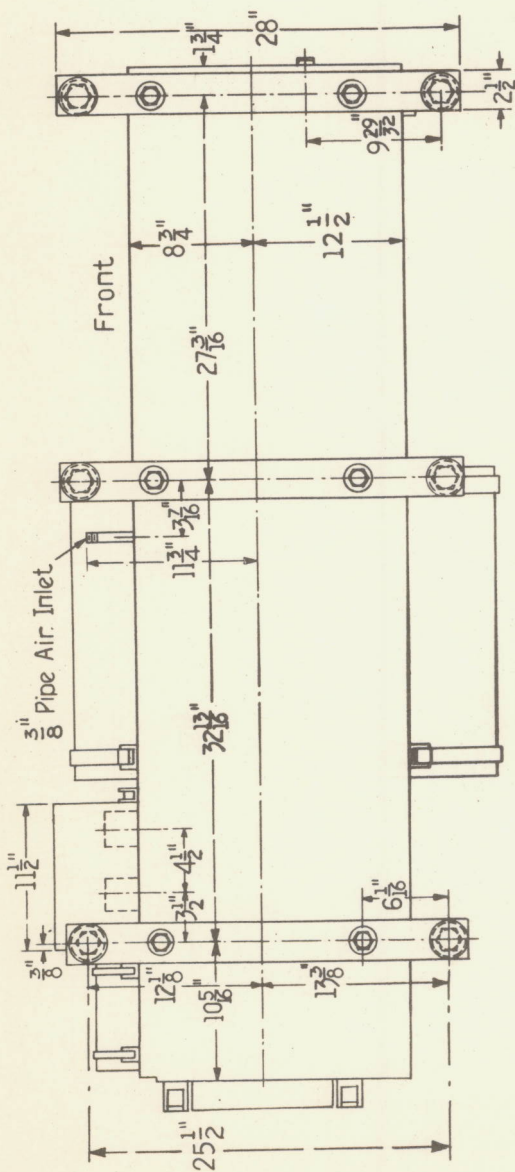
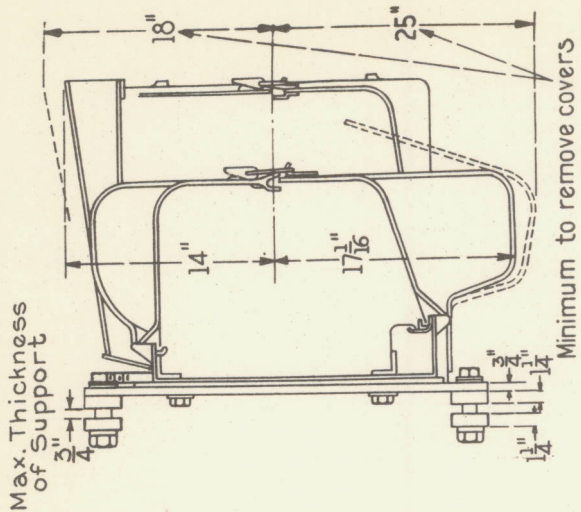
CONNECTIONS OF PC-12 CONTROLLER AND 4 MOTORS

Motor Controller Arrangement  
 of 600 Volt Car Equipment with 187c  
 Controller, PC-1E 12 Aug. 1922  
 MO-32027



150228



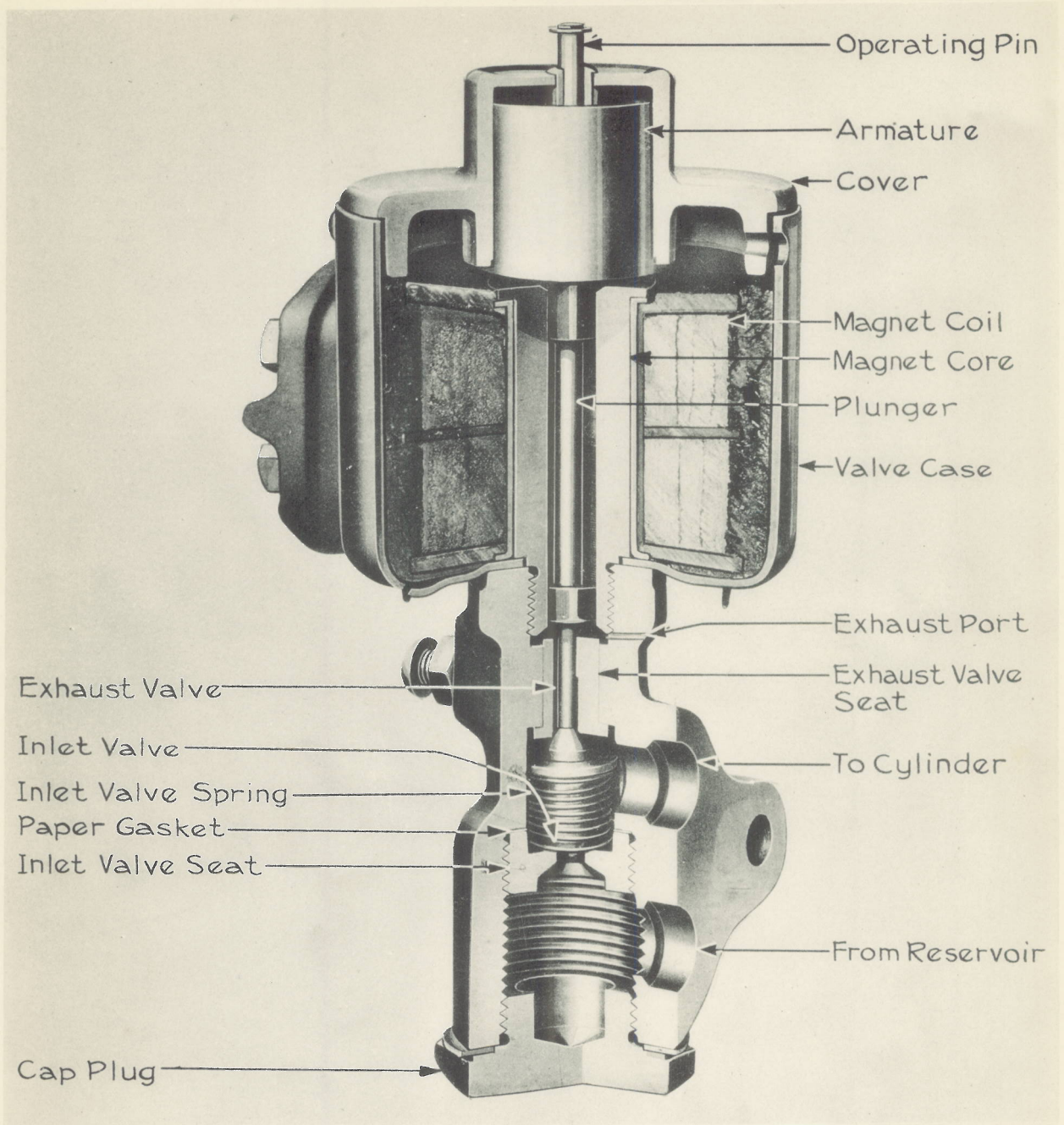


PC-12 Controller  
Approx. Wt. 1063 lb.  
The controller must be insulated from ground.

Outline of large controller for four motor 600 volt equipments.  
The controller for two motor equipments has approximately the same overall dimensions.

A 50 229

COPY OF PB50088-B WITH CHANGES

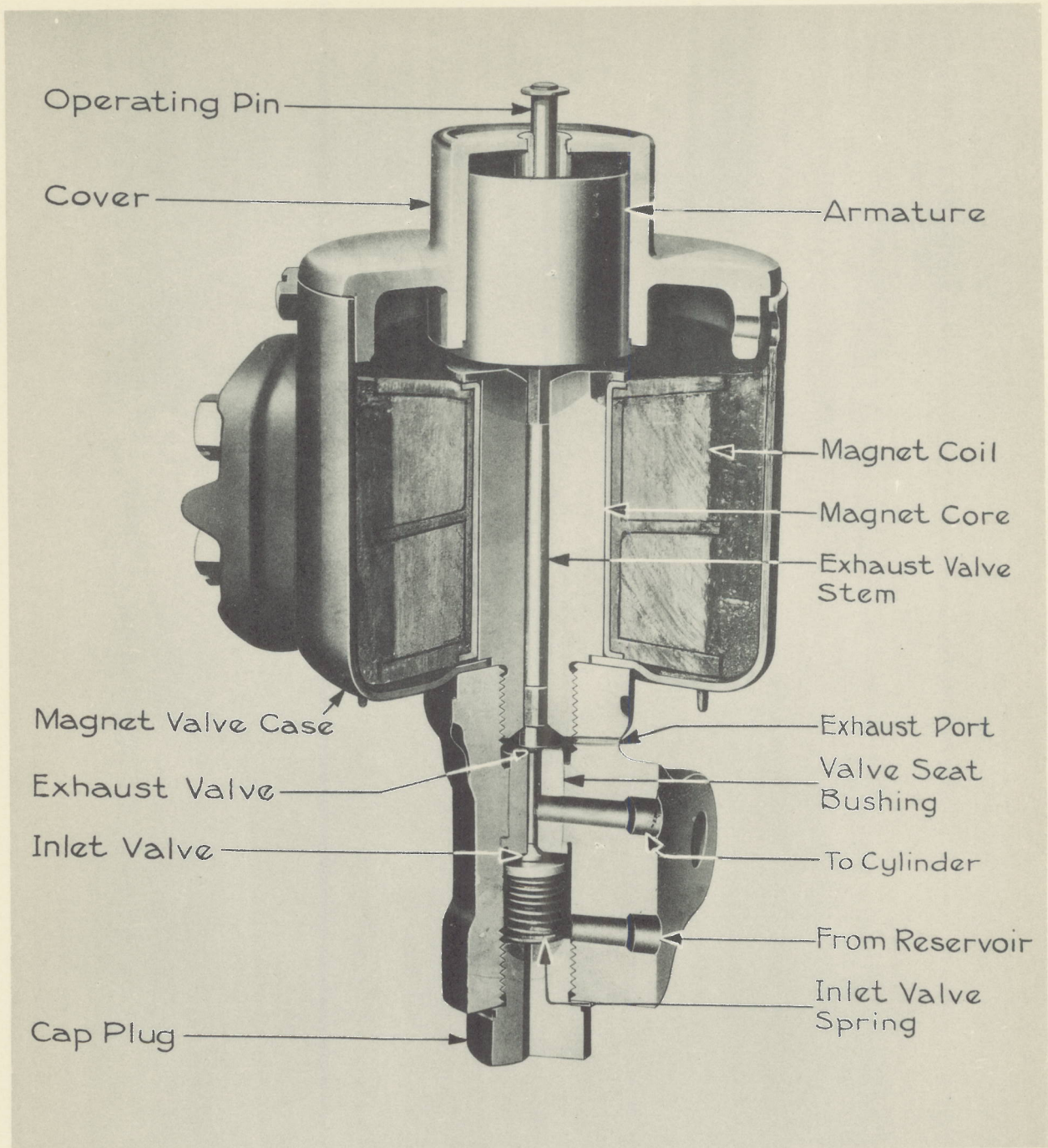


403856

MAGNET VALVE "OFF" TYPE.

INDEX 625.25

3 23 23



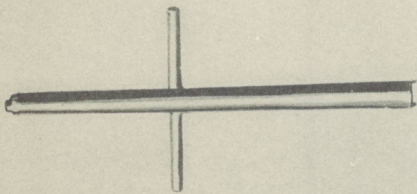
403855

MAGNET VALVE "ON" TYPE.

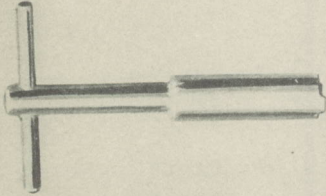
INDEX 625.25

3 23 23

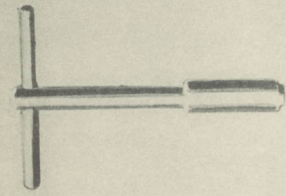
2139405 G3



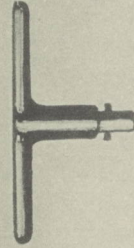
2193823 G2



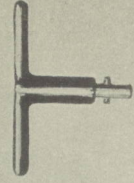
2193823 G1



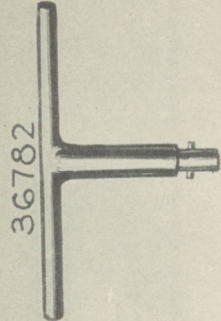
36781



36780



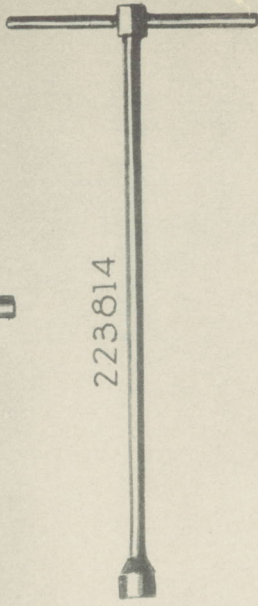
36782



1499733



223814



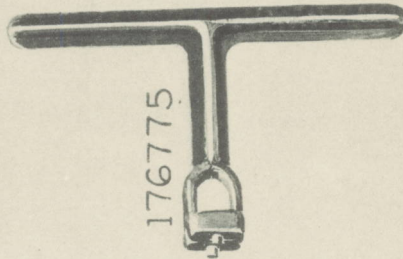
189905



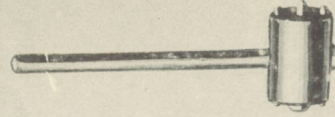
472536



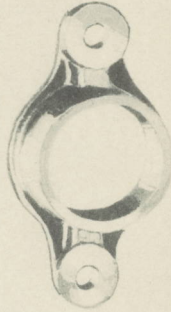
176775



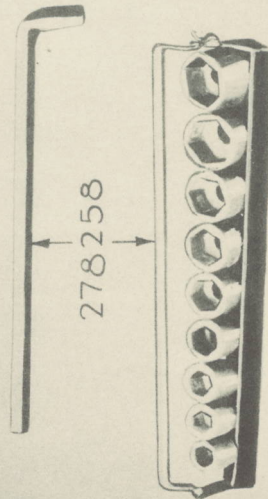
260513



176773



278258



423626

Tools For Type PC-Controllers